



## ABB C11 - Summary Sheet

### Summary

The C11 111 is the most compact single phase meter provided by ABB, and can be mounted on to just one module of a DIN rail. Supporting up to a 40 Amp load, this MID approved meter has a host of available parameters to read, including Energy (kWh), Current (I), Voltage (V), Power Factor (pf) and Active Power (W).

In addition, this unit has 1 pulsed output that can be used to log kWh readings or as an alarm (which is easily configurable on the meter) connected by a relay.

N.B. This meter can be fitted into a DIN Rail enclosure. [Click here](#) to see our full range of Enclosures.

### Product Code

### Meter Type

### Fitting Type

### Max Current (Amps)

### MID Approved

### Smart

### Input Type

### Output Type

### Tariffs

### Import / Export

### Module Width

### Availability

### Condition

### Brand

### Country of Manufacture

SPDABC1

Single Phase

DIN Rail

40

Yes

No

Direct Connect

Pulse

Single

Import Only

1

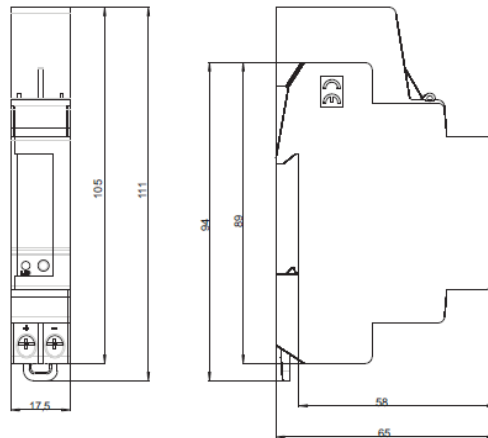
Next Day

New

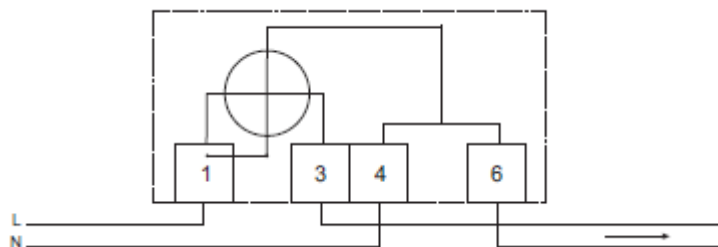
ABB

Sweden

### Dimensions



### Wiring Diagram



**Web: [www.spwales.com](http://www.spwales.com) | Email: [sales@spwales.com](mailto:sales@spwales.com) | Phone: 01803 295430 | Fax: 01803 212819**

While Stephen P Wales Ltd has made every reasonable effort to ensure the accuracy of this information, Stephen P Wales Ltd does not guarantee that it is error-free, nor does Stephen P Wales Ltd make any other representation, warranty or guarantee that the information is accurate, correct, reliable or current. Stephen P Wales Ltd reserves the right to make any adjustments to the information contained herein at any time without notice.