



---

THE HOME OF ENERGY MONITORING

---

# Multi-Channel Transmitter Specification

Name: E-Max Smart Home TX  
Model Name: EMSHTX



### Electrical Specification

Power Supply:	85- 480V AC, 50/60Hz
Meter Configuration :	Single/Two/ Three phase
Accuracy:	Class 2.0
Power Consumption:	<1.2W
Maximum Voltage:	528V AC
Maximum Impulse:	± 8kV (Air), ± 4kV (Contact)

### Current Transformer Input

Max. Current Rating:	60A/120A/200A
CT Diameter:	10mm/16mm/24mm
Cable Length:	60cm
Number of Input CT ports:	7

### Communication

Remote:	ISM 433MHz
Radio output:	+20dBm maximum
Security:	encryption
Transmission Data Rate:	per second

### Environmental

Ingress Protection:	Indoor Use Only (IPX0 rating)
Temperature:	Operating: 0° to 50° C Storage: -20° to 70° C
Relative Humidity:	< 85%

### Mechanical

Dimensions (W x H x D) :	11*7*2.5cm
Weight:	155gram
Enclosure:	Plastic, ABS/PC Blend

# Wi-Fi Version Display

Name: E-Max Smart Home Energy Monitor Kit  
Model Name: EMSHK



### Electrical Specification

Power Supply:	DC 5V
Meter Configuration :	Single/Two/ Three phase
Accuracy:	Class 2.0
USB Port:	USB 2.0 Standard Type-A
Data Storage:	24 months
Interface:	1x mechanical button /5x touch button
Install Type:	Table stand / Wall mounting
LCD Size:	128 x 78.4 mm
LCD Type:	4-Colour PMMVA Segment
Number of Transmitter Support:	Maximum 3

### Communication

Downstream Remote:	ISM 433MHz
Upstream Remote:	2.4G 802.11 b/g/n
Radio Output:	+20dBm maximum
Security:	Encryption
Transmission Data Rate:	per second

### Environmental

Ingress Protection:	Indoor Use Only (IPX0 rating)
Temperature:	Operating: 0° to 50° C
	Storage: -20° to 70° C
Relative Humidity:	< 85%

### Mechanical

Dimensions (W x H x D) :	167*25*127mm
Weight:	253gram
Enclosure:	Plastic, ABS/PC Blend

# Current Transformer Specification



**General electrical Specifications**

Rated Max Voltage: 660V  
 Dielectric Strength: 3000V  
 Rated Frequency: 50-60Hz  
 Output Connector: 3.5mm Jacket  
 Output Cable: 2-Core Shield Cable  
 Non-Linearity: ±2%  
 Insulation Impedance: >100MΩ (500Vdc)  
 Operation Temperature: -15° C to 50° C  
 Storage: -20° C to 70° C  
 Fire resistance: UL94-V0  
 Certification: CE, ETL

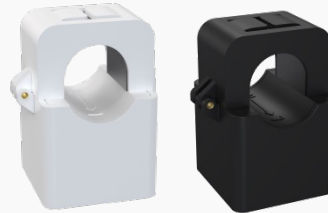


Model	Max. Current	Work Frequency	Diameter	Cable Length	Weight	Outlet Size
CT60A-10	60A	50-1KHz	10mm	60cm	15g	26*23*39mm
CT120A-16	120A	50-1KHz	16mm	60cm	45g	31*32*46mm
CT200A-24	200A	50-1KHz	24mm	60cm	73g	34*51*67mm

# CT Sensors



**Spec: 60A**  
**Name: CT60-16**  
**Model Name: CT60**



**Spec. 120A**  
**Name: CT120-16**  
**Model Name:CT120**



**Spec. 200A**  
**Name: CT200-24**  
**Model Name:CT200**

The Efergy logo consists of the word "efergy" in a lowercase, sans-serif font, with a registered trademark symbol (®) to its upper right. The logo is contained within a white speech bubble shape with a tail pointing towards the bottom-left corner.

efergy®

For more information visit our website [www.efergy.com](http://www.efergy.com) or contact us at [sales@efergy.com](mailto:sales@efergy.com)