



Three Phase DIN Rail Metering Kit - Summary Sheet

Summary

Our three phase DIN rail metering kit is built for fast and easy installation and is ideal for retrofit applications. The compact enclosure has cable entry points on either side and our meter engineers pre-fit the required CT links, voltage reference and earthing with clear labelling. It comes complete with split core CT's that simply clip around the supplies, saving time and disruption.

This kit is available with one of four meters offering a range of features from simple pulse outputs to remote access to readings via ethernet. You can also select CT's appropriate for your circuit with 24mm & 36mm apertures available covering loads of 100A to 400A. Can't find a meter or CT to suit your requirements, contact our friendly sales teams who will be happy to put together a bespoke quotation

	ND Metering Solutions - Rail 350	Eastron - SDM630CT	Carlo Gavazzi - EM330	Socomec - E48
MID Approved	No	Yes	Yes	Yes
Output Type	Pulse	RS485 Modbus & Pulse	RS485 Modbus & Pulse	Ethernet
Tariffs	Single	Single	Dual (controlled externally)	Multi Tariff
Import / Export	Import Only	Import & Export	Import & Export	Import & Export

Product Code	MKD
Power Supply	Three Phase
Availability	Special Order *

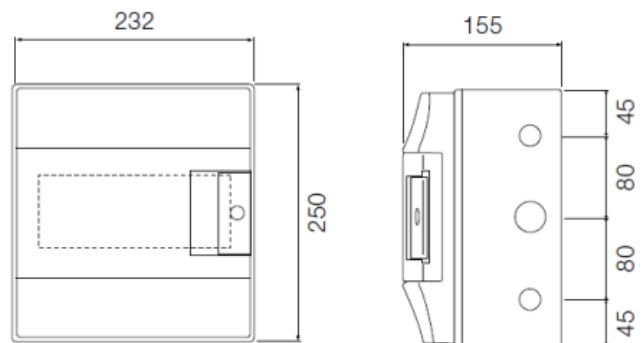
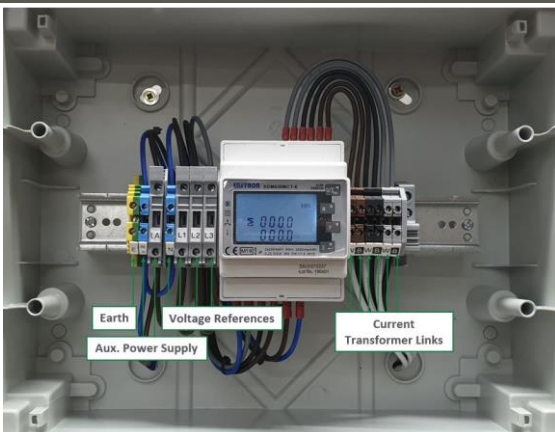
* Our pre-wired enclosures are built to order and are typically available in 2-3 days, however in times of high demand, this lead time may increase. Please contact us for more information.

What's included?

- 🔧 1 x 3-Phase DIN Rail Meter (see options on left)
- 🔧 1 x ABB Mistral 8 Module Enclosure
- 🔧 3 x Split Core CT (select ratio & aperture upon order)
- 🔧 CT links, voltage reference and earthing terminals
- 🔧 1m of 1.5mm stranded blue, brown, black & grey cable
- 🔧 1m of 2.5mm stranded earth cable

Wiring Guide

Enclosure Dimensions



Web: www.spwales.com | Email: sales@spwales.com | Phone: 01803 295430 | Fax: 01803 212819

While Stephen P Wales Ltd has made every reasonable effort to ensure the accuracy of this information, Stephen P Wales Ltd does not guarantee that it is error-free, nor does Stephen P Wales Ltd make any other representation, warranty or guarantee that the information is accurate, correct, reliable or current. Stephen P Wales Ltd reserves the right to make any adjustments to the information contained herein at any time without notice.