



S. P. Wales Ltd

Electrical Metering Specialists



WAGO Code of Practice Meter Enclosures - Summary Sheet

Our Code of Practice meter enclosures from WAGO, are designed for low and high-voltage sites consuming between 110kW to 10MW. The pre-wired enclosures come ready for the installation of one or two meters, (main and check), on to the front of the door, and include all required fuses and terminals as per the requirements set out by Elexon.

Please note, these enclosures are not supplied with CT's or meters which should be supplied and installed as per the requirements of the appropriate DNO.

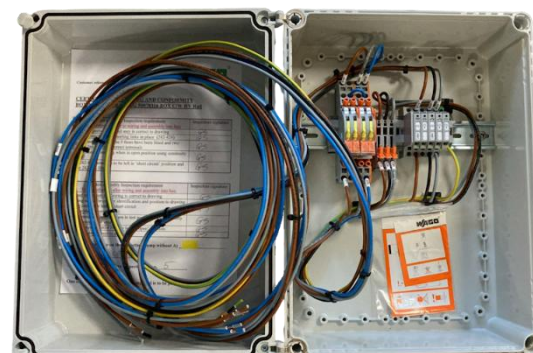
Range

Part Code	Manufacturer's Part Code	Description	Supply	CoP	HV / LV	No. of Meters
MKWAC22	51284923	WAGO COP2 HV/LV Dual Enclosure	10MW to 100MW	2	HV / LV	2
MKWAC31	50078520	WAGO COP3 HV Single Enclosure	1MW to 10MW	3	HV	1
MKWAC32	50078316	WAGO COP3 HV Dual Enclosure	1MW to 10MW	3	HV	2
MKWAC51	50078315	WAGO COP5 LV Enclosure	100kW to 1MW	5	LV	1

Images



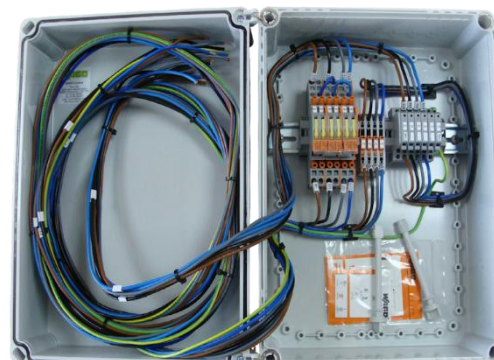
MKWAC22



MKWAC31



MKWAC32



MKWAC51

Web: www.spwales.com | **Email:** sales@spwales.com | **Phone:** 01803 295430

While Stephen P Wales Ltd has made every reasonable effort to ensure the accuracy of this information, Stephen P Wales Ltd does not guarantee that it is error-free, nor does Stephen P Wales Ltd make any other representation, warranty or guarantee that the information is accurate, correct, reliable or current. Stephen P Wales Ltd reserves the right to make any adjustments to the information contained herein at any time without notice.