



EC Type Examination Certificate Number: **0120/SGS0206**

Jiaxing Eastron Electronic Instrument Co., Ltd.

No. 1369, Chengnan Road,
Jiaxing,
Zhejiang,
China,
314001.

Instrument Identification:
SDM230 Series

Instrument Traceable Number
0120/SGS0206

Single Phase, Active Import/ Export (kWh), Indoor, Electricity Meter

has been assessed and certified as meeting the requirements of

EC Directive 2004/22/EC

Measuring Instruments Annex B

It is certified that the manufacturer's technical design and specimen for the above instrument has been examined and, based on the evidence submitted, it is considered that the instrument conforms to the requirements of MI-003 of EC Directive 2004/22/EC

This certificate must be used in conjunction with a certificate covering the product verification as required in Annex D or Annex F


This certificate is valid for 10 years from 30th September 2015 to 29th September 2025
Issue 2

Certification is based on report number(s) SHES141200649301 issued 16th April 2015,
EMA207767 issued 9th October 2015

Authorised Signature


SGS United Kingdom Limited, Notified Body 0120
Unit 202B Worle Parkway, Weston-super-Mare, BS22 6WA UK
t +44 (0)1934 522917 f +44 (0)1934 522137 www.sgs.com

Contact Address SGS United Kingdom Ltd, Units 12A & 12B, South Industrial Estate, Bowburn, Durham, DH6 5AD UK
t +44 (0)191 377 2000 f +44 (0)191 377 2020 www.sgs.com

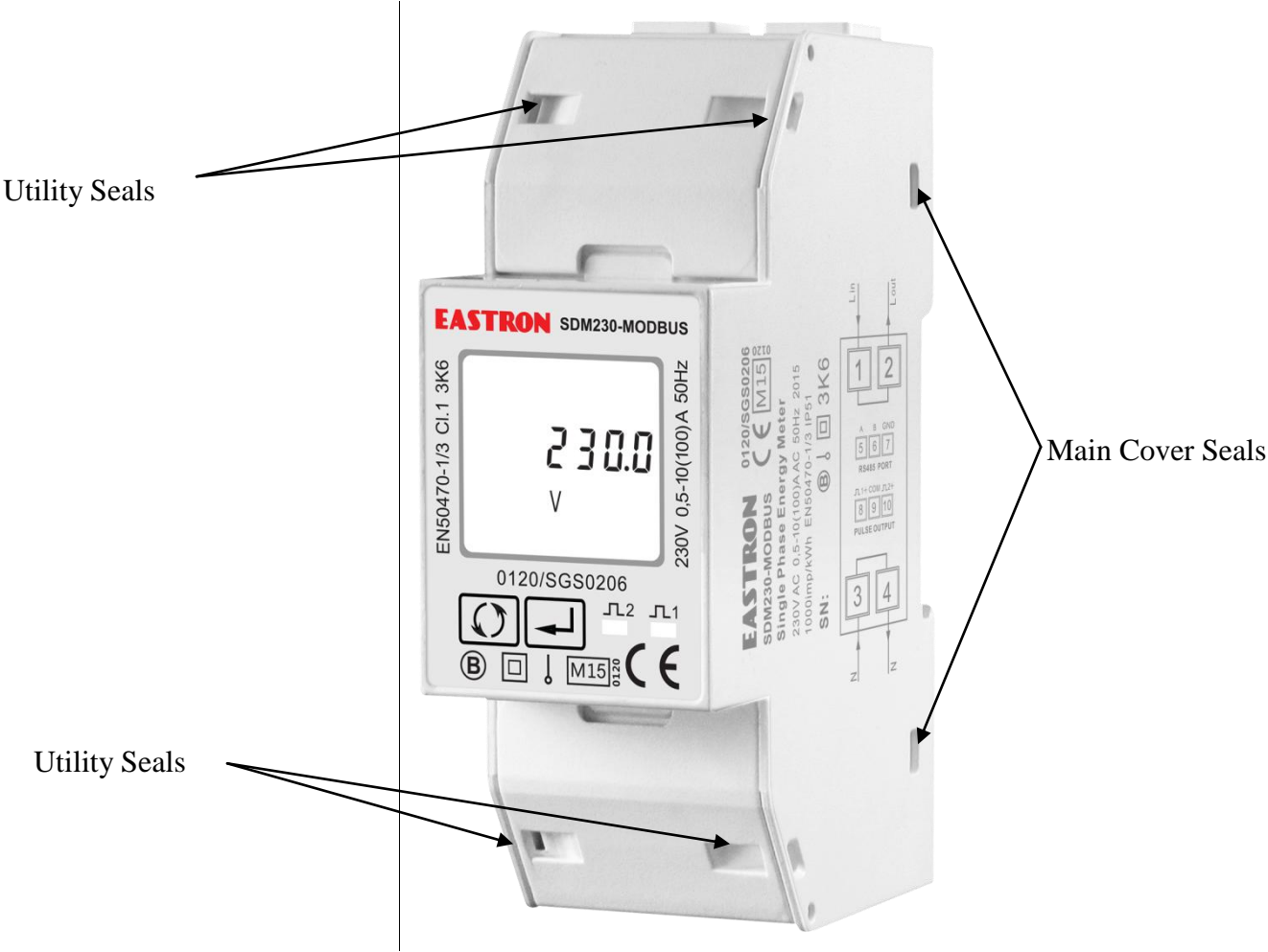
	EC-Type Examination Certificate Number:	
	0120/ SGS0206	
	Issue Number: 2	Dated: 23 rd November 2015


1. Technical Data

Manufacturer	Jiaxing Eastron Electronic Instruments Co., Ltd.
Meter Type(s)	SDM230-Modbus, SDM230 Bi, SDM230 DR, SDM230 Pulse
Voltage Rating (<i>Un</i>)	230V
Current Rating (<i>I_{min}</i> – <i>I_{ref}</i> (<i>I_{max}</i>))	0.5-10(100)A
Frequency (<i>Fn</i>)	50Hz
Active Accuracy Class (<i>kWh</i>)	A or B (kWh)
Type of circuit	1p2w
Temperature Range	-25°C to +55°C
Software Version No.	V1.2
Identification Location	Nameplate
Bill Of Materials No.'s	SDM230MODBUS-20150929
IP Rating	IP51
Insulation Protective Class	Class II
LED Pulse Constant	1000imp/ kWh
Impulse Voltage Rating	6kV
AC Voltage Rating	4kV
Terminal Cover Sealing Type	4 x Wire & Crimp
Integrity of meter	Inaccessible without breaking seals
Intended Location of the Meter	Indoor
Type of Register	LCD

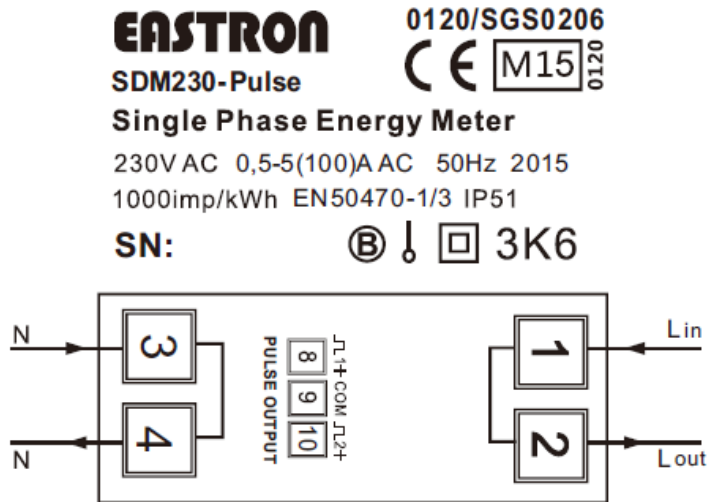
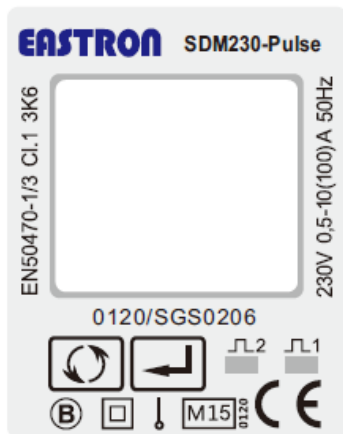
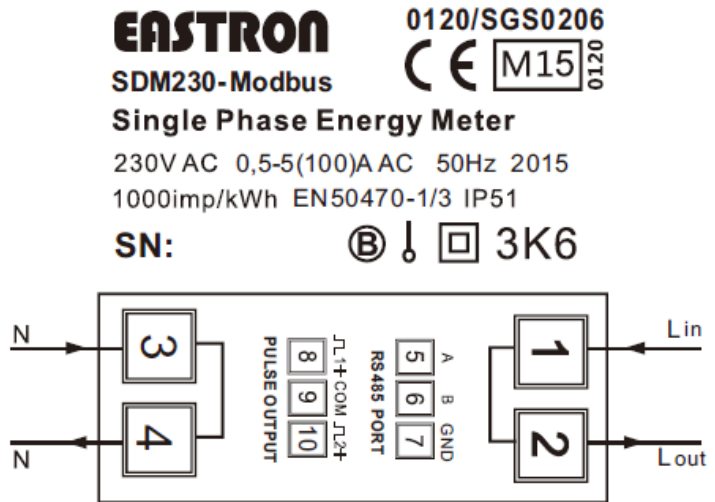
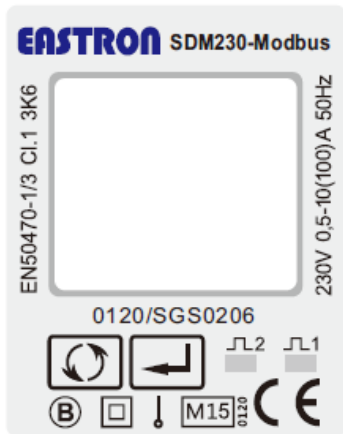
	EC-Type Examination Certificate Number:	
	0120/ SGS0206	
	Issue Number: 2	Dated: 23 rd November 2015

2. Photograph of Meter and Sealing Plan



	EC-Type Examination Certificate Number:	
	0120/ SGS0206	
	Issue Number: 2	Dated: 23 rd November 2015

3. Name plates and Markings

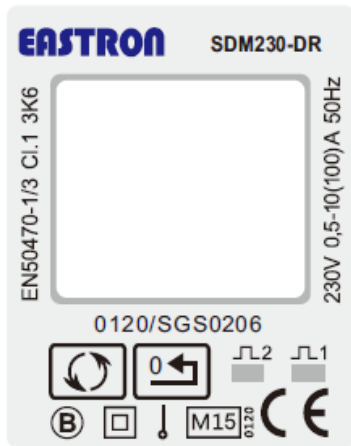


EC-Type Examination Certificate Number:

0120/ SGS0206

Issue Number: 2

Dated: 23rd November 2015



EASTRON

0120/SGS0206

SDM230-DR

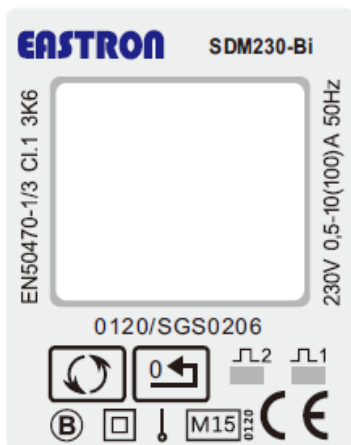
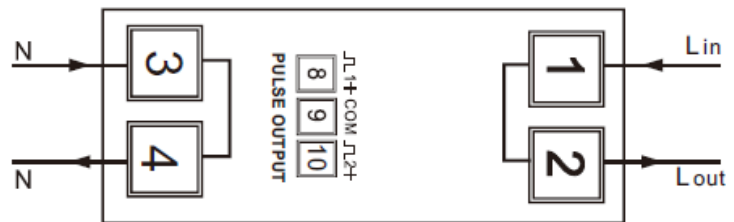
CE M15 0120

Single Phase Energy Meter

230V AC 0,5-5(100)AAC 50Hz 2015

1000imp/kWh EN50470-1/3 IP51

SN: (B) ⚡ □ 3K6



EASTRON

0120/SGS0206

SDM230-Bi

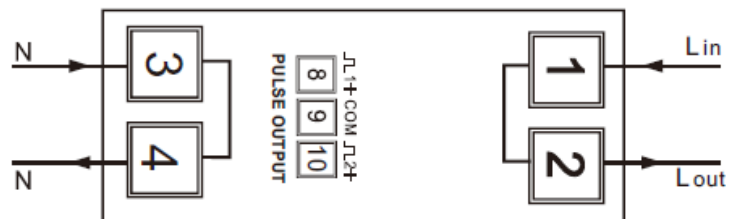
CE M15 0120


Single Phase Energy Meter

230V AC 0,5-5(100)AAC 50Hz 2015

1000imp/kWh EN50470-1/3 IP51

SN: (B) ⚡ □ 3K6



	EC-Type Examination Certificate Number:	
	0120/ SGS0206	
	Issue Number: 2	Dated: 23 rd November 2015

3. Influence factors for temperature, frequency and voltage


Current	PF Cos	-25°C	-10°C	5°C	30°C	40°C	55°C
I _{min}	1.0	0.45	0.33	0.23	0.15	0.17	0.23
I _{tr}	1.0	0.44	0.31	0.19	0.07	0.10	0.18
10I _{tr}	1.0	0.42	0.29	0.18	0.03	0.08	0.16
I _{max}	1.0	0.27	0.19	0.12	0.03	0.06	0.12
I _{tr}	0.5ind	0.48	0.36	0.27	0.17	0.18	0.22
10I _{tr}	0.5ind	0.41	0.28	0.17	0.03	0.08	0.17
I _{max}	0.5ind	0.27	0.18	0.12	0.04	0.07	0.13
I _{tr}	0.8cap	0.45	0.31	0.20	0.09	0.12	0.18
10I _{tr}	0.8cap	0.40	0.27	0.16	0.04	0.10	0.19
I _{max}	0.8cap	0.26	0.19	0.11	0.05	0.08	0.15

During the type approval examination the influence factors for temperature, frequency and voltage are determined per load point. The table above represents the sum of the square values per load, determined via the following formula:-

$$\delta e(T, U, f) = \sqrt{(\delta e^2(T, I, \cos\phi) + \delta e^2(U, I, \cos\phi) + \delta e^2(f, I, \cos\phi))}$$

where

$\delta e(T, I, \cos\phi) =$ Additional error due to variation of the temperature at the same load
 $\delta e(U, I, \cos\phi) =$ Additional error due to variation of the voltage at the same load
 $\delta e(f, I, \cos\phi) =$ Additional error due to variation of the frequency at the same load


	EC-Type Examination Certificate Number:	
	0120/ SGS0206	
	Issue Number: 2	Dated: 23 rd November 2015

4. Annex of Variants

Product Variant Identification Details:

Type Designation	Description of meter
SDM230-Modbus:	Single tariff, total active energy, resettable active energy, import active energy, export active energy, total reactive energy, import reactive energy, export reactive energy, active power, reactive power, voltage, current, frequency, power factor, power demand, RS485 Modbus.
SDM230-Pulse:	Single tariff, total active energy, resettable active energy, import active energy, export active energy total reactive energy import reactive energy export reactive energy active, power reactive, power, voltage, current, frequency, power factor, power demand.
SDM230-DR:	Single tariff, total active energy, resettable energy, active power
SDM230-Bi:	Single tariff, import active energy, export active energy, import active power, export active power, total active energy, total active power

Modifications to the meter(s) described according to approval No. **0120/SGS0206** must be notified to the issuing body to confirm the meter(s) continuing compliance to the relevant pattern approval standard(s).

	EC-Type Examination Certificate Number:	
	0120/ SGS0206	
	Issue Number: 2	Dated: 23 rd November 2015

5. Document Revision History

Issue	Date	Comments
1	09/10/2015	Initial Issue
2	23/11/2015	Meter types SDM230-Pulse, SDM230-DR and SDM230-Bi added to approval